



**TECHSVOLT**

BUSINESS  
**COMPANY  
PROFILE**

[www.techsvolt.com](http://www.techsvolt.com)  
[info@techsvolt.com](mailto:info@techsvolt.com)



# • INTRODUCTION

Techsvolt is a leading industrial electrical and lighting trading company, renowned for providing high-quality products and exceptional customer service. Founded with a mission to illuminate and power industries, Techsvolt has established itself as a trusted partner for businesses across various sectors.

Our Mission:

At Techsvolt, our mission is to deliver innovative electrical and lighting solutions that enhance the efficiency and safety of industrial operations. We strive to offer products that not only meet but exceed industry standards, ensuring reliability and performance in every application.

Techsvolt offers a comprehensive range of products designed to cater to the diverse needs of the industrial sector, including:

- Industrial Lighting Solutions:- High-efficiency LED lights, floodlights, high bay lights, explosion-proof lighting, and emergency lighting systems.
- Electrical Components:- Industrial Plug & sockets, Isolators, Junction Box, Transformers, Cable Gland & Lugs, and explosion-proof Products.
- Explosion-Proof Solutions:- Specialized lighting and electrical products designed for hazardous environments, ensuring safety and compliance with industry standards.
- Custom Solutions:- Tailored electrical and lighting systems designed, Atex product selection, to meet specific client needs and operational requirements.
- Lifting products:- Lifting products like hoists, winches, and cranes are essential for safely moving heavy loads in industries such as construction and offshore sites. They offer strength, durability, and come in manual or powered versions, with specialized options for hazardous environments.
- Technical Support and Consultation:- Our team of experts provides comprehensive technical support and consultation to help clients select the right products and ensure their optimal performance.

We are a partner dedicated to supporting industrial growth and innovation. Whether you need advanced lighting systems, robust electrical components, explosion-proof solutions for hazardous areas, or specialized services, Techsvolt is your trusted source for high-quality industrial solutions.

# • PRODUCTS & SERVICES

## ELECTRICAL

- STANDARD INDUSTRIAL PLUG & SOCKET
- ISOLATORS (GRP, METAL)
- JUNCTION BOX (GRP, PVC, SS)
- LOCAL CONTROL STATION
- CABLE GLANDS & LUGS
- FIRE RESISTANT SOCKET & JB
- PRE-WIRED SOCKETS & JB
- DIE CAST METAL PLUG & SOCKET
- PORTABLE SITE TRANSFORMERS
- CUSTOM DISTRIBUTION BOXES WITH SOCKET & PLUG
- HIGH AMP PLUG & SOCKET UPTO - 1000A
- EV CHARGING STATIONS & CABINETS UNITS
- DESIGN AND BUILD ELECTRICAL SOLUTION

## LIGHTING FIXTURES

- LED FLOOD / STREET LIGHTS
- LED PENDANT LIGHTS
- LED LINEAR LIGHTS
- HIGH BAY/ BULKHEAD LIGHTS
- ROAD/UG TUNNEL LIGHTS
- WELL GLASS FIXTURES
- STAINLESS STEEL LIGHTING FIXTURES
- HIGH TEMP LIGHTING UPTO 120°C
- HIGH EFFICIENCY LIGHT - 160lm/W
- VERY HIGH INGRESS PROTECTION- IP69K
- SEARCH LIGHTS, SHIPS, WATCH TOWER
- CLEAN ROOM LIGHTING
- VANDALPROOF LIGHTING
- SKY DESIGN PANEL LIGHTS
- MOBILE CRANE TOWER LIGHTS

## EXPLOSION PROOF

- EX INDUSTRIAL PLUG & SOCKET
- EX ISOLATORS (GRP, METAL)
- EX JUNCTION BOXES & SWITCHES
- EX CABLE GLANDS
- EX A/C UNITS (INDOOR & OUTDOOR)
- EX LED/FLUORESCENT LIGHTING
- EX SWITCHES & TRANSMITTERS
- EX SIGNALING DEVICES
- EX CONTROLLER & CONTROL PANEL
- EX FANS & BLOWERS
- EX ELECTRIC MOTORS
- EX PORTABLE LIGHTING
- EX DIGITAL CAMERA
- EX SIGNAL TOWER LIGHTS
- EX EXIT LIGHT
- EX LIFTING TOOL EQUIPMENTS/MACHINES
- EX JB WITH TERMINALS AND SOCKETS

## SERVICES

- PROCUREMENT AS A SERVICE (PaaS)
- LIGHTING DESIGN CALCULATION & PRODUCT SELECTION
- DESIGN & BUILD ELECTRICAL SOLUTION
- EXPLOSION PROOF PRODUCT DESIGN AND SELECTION.
- CONVERSIONS OF NORMAL MACHINERY TO ATEX RATED PRODUCT.
- ATEX ENGINE PACKAGES.
- CUSTOM PRODUCTS OF LIGHTING FIXTURES.
- DESIGNED & BUILD FOR RIGGING, INDUSTRIAL LIFTING EQUIPMENT
- CUSTOM MADE EARTH STRAPS FOR CABLE LADDER NETWORKS
- EMERGENCY LIGHTING AND ITS TESTING SYSTEMS

# • PRODUCTS & SERVICES

| <b>LIFTING EQUIP.</b>  | <b>HVAC</b>   |
|--|---|
| <ul style="list-style-type: none"><li>• MANUAL HOISTING, CHAIN BLOCK</li><li>• PNEUMATIC HOISTING, TROLLEY</li><li>• SUBSEA CHAIN BLOCK, TROLLEY</li><li>• ANTI CORROSION EQUIPMENTS</li><li>• STAINLESS STEEL PRODUCTS</li><li>• EXPLOSION PROOF PRODUCT, ATEX</li><li>• ELECTRICAL HOISTING PRODUCTS</li><li>• ALL UNIVERSAL BEAM CLAMPS TYPES</li><li>• MANUAL &amp; GEARED TROLLEYS</li><li>• COMBINED MODEL OF CHAIN HOIST AND TROLLEY</li><li>• ULTRA LOW HEADROOM TROLLEY HOIST, MANUEL &amp; ELECTRICAL</li><li>• SPECIALIST LIFTING EQUIPMENT FOR RIGGING, ENERGY, AND INDUSTRIAL</li></ul> | <ul style="list-style-type: none"><li>• ATEX RATES AIR CONDINING UNIT</li><li>• AIR HANDLING UNITS (AHUS)</li><li>• CHILLERS (WATER/AIR-COOLED)</li><li>• HEAT EXCHANGERS</li><li>• HVAC DUCTS AND DUCT FITTINGS</li><li>• THERMOSTATS AND CONTROLLERS</li><li>• VENTILATION FANS</li><li>• AIR FILTERS</li><li>• COOLING TOWERS</li><li>• VARIABLE REFRIGERANT FLOW (VRF)</li><li>• BOILERS AND FURNACES</li><li>• HUMIDIFIERS AND DEHUMIDIFIERS</li><li>• VAV (VARIABLE AIR VOLUME) BOXES</li><li>• PUMPS (CIRCULATING PUMPS, CONDENSATE PUMPS)</li><li>• EQUIPMENT SUPPORTING SYSTEM</li></ul> |

# Electrical Products

**Palazzoli**

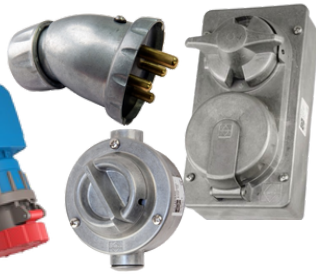


**PROCONNECT**  
Industrial connectors



### Industrial Socket & Plug

In PVC, GRP, Marine Aluminium. Amp 16, 32, 63, 125, 250. IP44 - IP69. Build in Direct, Fuse, Switch, Padlock, MCB, Prewired, Transformer, DII rail.



### Metal Clad Switch, Socket & Plug

In Zinc Die Metal Clad Natural Finish. rated from 10A, 13A, 15A, 30A IP66. Water Tight metal cap to Close. Switch, Socket & Plug



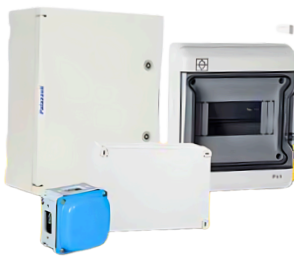
### Interlock Socket & Plug in Steel

Marine Aluminium alloy. Amp 250, 320, 400, P65-IP67, IK10. In build Fuse and MCB. Interlock Mechanism with High Current Capacity



### High Amp Socket & Plugs

Range from 250Amp to 800Amp Aluminium Alloy, Corrosion Proof Tempered IP67. High Current Capacity with durability.



### Enclosures and Junction Boxes

IN PVC, GRP, Marine Aluminium and stainless steel. IP44, IP56, IP67. Fire Resistant Boxes E30-E60-E90. Available in different sizes, shapes.



### Cabinets for Multiple EV Charging Units

Suitable for Domestic, Commercial & Industrial. Customizable Distribution Cabinets for Multiple EV Charging. AC & DC Charging Points.



### Pre assembled Plug & Socket Box

Pre Wired Distribution Boards with Equipped with multiple sockets. In technopolimer and GRP. Designed for quick installation.



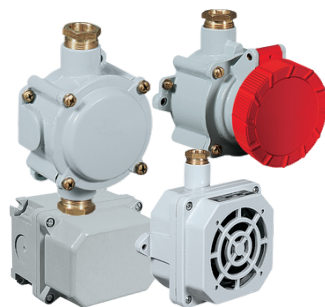
### Isolators & Switchgear Controls Switch

In Technopolimer, GRP, Marine Aluminium, Fire rated. Range from 16A to 630A. Switch fuses and Disconnectors Switch



### Portable Safety Transformers

Step down & up high voltage in safe level. Compact and easy. Reducing the risk of electrical hazards. Multiple Outlets



### Marine Sockets, Switches, Boxes

Reliable electrical installations on boats, ships, offshore platforms, and Ports. Constructed in stainless steel, brass, or marine-grade plastic.



### Ventilation System for Tunnels

Robust materials to handle high power loads. Centralize the operation of equipments with tunnel safety systems.

# Lighting Fixtures



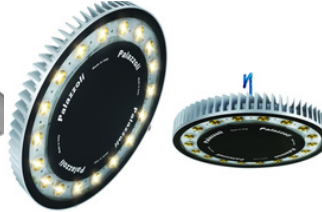
**Floodlights**

High Lumen Output Upto 2,35,500lm Available in the standard version with DALI control system and for high temperatures up to +70°C.



**Road/Street Light Fixtures**

Street light fixtures are durable, outdoor lights for illuminating streets and public areas mounted in Pole and Wall In LED types.



**HighBay Industrial, Warehouse Lights**

Highbay industrial lights are powerful fixtures designed to illuminate large spaces with high ceilings, such as warehouses, factories.



**LED Linear Lights**

Energy-efficient, available in various color temperatures. Luminat offices, retail environments, and lobbies for clean, even lighting.



**Tunnel LED Lights**

Tunnel lights are designed illuminat the tunnel environments, ensuring clear visibility & coverage for drivers. Mounted on tunnel ceilings & wall.



**Search Lights**

Searchlights for military, private and commercial sea-craft, and land security operations. Available in LED, Carbon arc, Xenon arc and Halogen.



**Clean Room LED Light**

Luminaire suitable for concealed ceilings. Applications are in Food Processing, Manufacturing and Health Care.



**Sky Panel Lights**

The Skylight is a back-lit panel with customizable design for spaces without windows like schools, and hospitals and Meeting rooms.



**Emergency Exit Lighting**

Emergency Exit lights are built for high-intensity use in industris like warehouses, factories, & supermarket with battery backup.



**Bulkhead Lights**

Bulkhead, Well glass, Round and Oval lights are strong, durable, weatherproof fixtures ideal for outdoor or industrial use.



**Wall Mounted Decorative Lights**

Wall-mounted decorative outdoor lanterns are stylish fixtures designed to enhance the exterior appearance of buildings while providing illumination.



**Vandal Proof lighting**

Vandal-proof light fittings have high impact resistance (IK rating 11+) and secure housings to prevent tampering and damage in open area & prison/jail.

# Explosion-Proof (Atex, IECEx)



**Ex Floodlights**

EX floodlight is a ATEX-certified solution for hazardous environments, offering powerful illumination and versatile mounting options.



**Ex Highbay/Pendent Lights**

EX high bay light is designed for high-ceiling areas, and EX pendant light offers focused, safe lighting in explosive environments.



**Ex LED/Fluorescent Linear Lights**

EX LED or fluorescent linear lights provide safe, efficient lighting in hazardous areas with a slim design for even illumination.



**Ex Watertight Oval, Round Light**

EX watertight oval or round lights provide secure, weatherproof lighting for hazardous environments mounting on wall.



**Ex d LED Fixtures**

Ex d LED fixtures are ATEX Ex d rating lights designed to prevent ignition in hazardous areas, offering safe and reliable illumination.



**Ex Portable Area LED Lights**

EX portable area LED lights are ideal for temporary or mobile lighting for oil and gas, mining, or emergency response.



**Ex Panel Lights**

EX panel lights are designed in sealed construction to prevent ignition of explosive substances, flat-panel design for offices.



**Ex Exit Lights**

EX exit lights are explosion-proof emergency lights designed to provide clear exit guidance in hazardous environments.



**Ex Plug and Socket**

EX plug and socket are explosion-proof connectors designed for safe electrical connections in hazardous environments.



**Ex Isolator, JB and Switches**

EX isolators, junction boxes (JB), and switches are ex components designed for safe operation and control in explosive atmospheres.



**Ex Cable Glands and Lugs**

EX cable glands are explosion-proof components designed for secure and safe cable connections in Junction Boxes.



**Explosion proof Junction Box**

EX junction box with terminals and controllers with high-quality insulating materials, and Gaskets and seals ensure the enclosure is airtight

# Explosion-Proof (Atex, IECEx)



**PYROBAN**<sup>®</sup>

**Ex-tech**<sup>®</sup>  
SIGNALLING

**OME**



## Ex Forklift & Equipments

Ex forklifts and equipment are explosion-proof machinery built to operate safely in environments with explosive risks for material handling.



## Ex Electric Motors

Ex electric motors are engineered to perform safely in explosive conditions, with robust features to prevent ignition and ensure secure operation..



## Ex Air Conditional Units

Ex air conditioning units are designed to operate safely in dangerous zones rooms to offer reliable cooling.



## Ex Signalling Devices

Ex Signalling Devices designs and manufactures high quality, modular audible and visual signalling solutions.



## Ex Power Distribution Units

Ex power distribution units are custom designed for project sites to ensuring safe and efficient to manage electrical power.



## Ex Axial Roof, Centrifugal Fan

Ex axial roof and centrifugal fans are built to offer reliable ventilation in Flammable atmosphere.



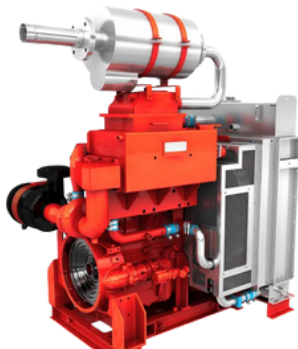
## Ex Battery Pack

Ex battery packs are build for safe operation in flammable areas, offering reliable battery power for critical equipment.



## Ex Rated Chain Hoists and Trolleys.

Ex-rated chain hoists and trolleys are built for hazardous areas, for lifting and movement of loads in Rigs and Oil & gas projects.



## Ex Packaged Engines

Ex diesel package engines are available in standard or custom builds, certified for Zone 2 hazardous areas, with fixed or variable speed & power output.



## Ex Pallet truck scale

Ex Pallet truck scale for use in ATEX hazardous areas. Available in approved version for legal-for-trade use.



## Ex Cranes, Access Platforms

Ex equipment conversion solutions designed in accordance with military standards for ground support equipment.



## Ex Hydraulic Power Pack

Ex Hydraulic Powerpack with a Caterpillar engine, hydraulic pump, tank, and controls, designed for safe operation in explosive atmospheres.



# Lifting Equipments



**William Hackett**  
Lifting Products Limited



**HADEF**



## Hand Chain Hoist

A hand chain hoist is a manual lifting device used to lift and lower heavy loads with a chain.



## Manual/ Geared Trolley

This high quality trolley is precision engineered in capacities from 500kg to 10 tonne. Available in various track widths of Beam Range 1, 2.



## Lever Hoist

Lever hoist includes Working load limit range upto 15 tonnes. Hooks have overload indicator marks either side of the hook throat with pawls.



## Combined Chain Hoist and Trolleys

Combined Hoist and Trolleys meet all the international standards. This combinations are available to fit various track widths.



## Multi-Directional Clamp

Ideal for lifting and handling materials in construction, shipbuilding, other industries, and use as anchor points for hoists and pulling tasks.



## Wirerope winches

Hand and Electric cable winches are available in varies capacity. Used for lifting or pulling heavy loads, with strong, durable wire rope.



## Corrosion Protected SS Hoist & Geared Trolley

Corrosion-protected hoists and geared trolleys are designed to withstand harsh environments like offshore to ensuring long-lasting.



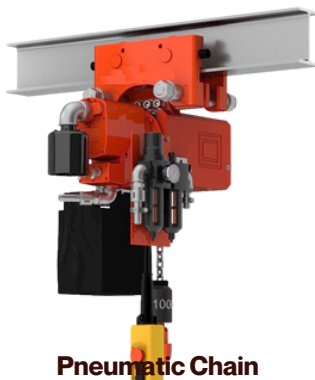
## Ex Rated Chain Hoists and Trolleys.

Ex-rated chain hoists and trolleys are built for hazardous areas, for lifting and movement of loads in Rigs and Oil & gas projects.



## Ultra Low Headroom Trolley Hoist

Suitable for Extremely low headroom for use where space is limited. Marine paint protected from corrosion. Delivery 12t - 25t Capacity.



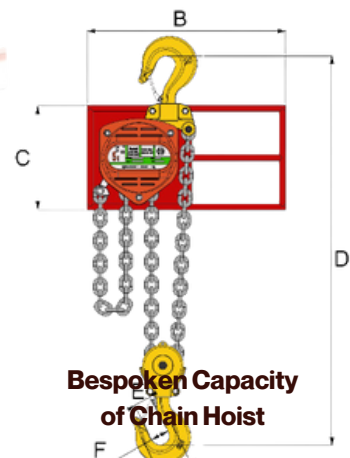
## Pneumatic Chain Hoists

Pneumatic chain hoists are compressed air-powered lifting devices for heavy-duty applications & reliable operation in tough conditions.



## Electric Chain Hoist

Electric Chain Hoist available in multiple varieties of trolley and capacities of 250kg to 50tons.

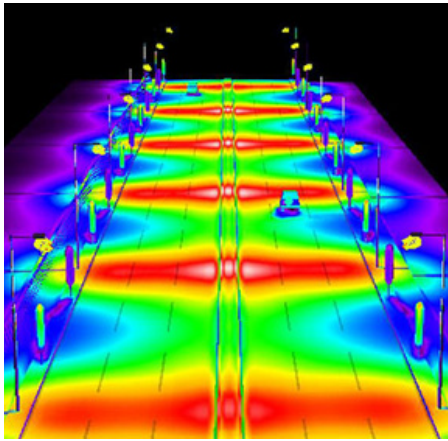


## Bespoken Capacity of Chain Hoist

Chain hoists are custom-designed to meet specific lifting requirements, offering tailored solutions for unique load capacities and applications.

# Services & Special Products

## Explosion proof lighting design and installation (ATEX / IECEx )



EX Solutions offers comprehensive lighting design and installation services tailored for use in high-risk areas. We begin by assessing the lighting needs of each zoned area, based on a thorough understanding of the activities performed. With extensive expertise in explosion-proof lighting, we ensure ATEX/IECEx compliance, energy efficiency, low maintenance, and optimal performance to reduce long-term operating costs. Our solutions guarantee the right lighting levels where safety is critical.

Our Ex lighting systems are versatile and suitable for various applications, including onshore and offshore processing, manufacturing, storage, and other high-risk industries like distilleries, utilities, chemicals, food, and pharmaceuticals.

## Chain products and Lifting solutions

We have been supplying a comprehensive range of chain and chain-related products. As a leading provider of chain products and lifting system solutions, We serves a wide array of industries:

**Industrial, Construction, and Utilities:** Offering top-tier chain and wire rope sling systems, hoisting equipment, and stainless steel products.

**Oil and Gas:** Specializing in lifting solutions for offshore, subsea, and hazardous environments, including explosion-proof equipment for safe operations.

**Offshore Products:** Providing a dedicated range of products designed for the offshore sector, including corrosion-resistant hoists, trolleys, wire rope winches, and custom lifting solutions tailored for the demanding conditions of marine and offshore platforms.

**Explosion-Proof Applications:** Supplying lifting and handling solutions designed for use in explosive atmospheres, meeting stringent safety standards such as ATEX and IECEx compliance.

**Bespoken Capacity of Chain Hoist:** Chain hoists are custom-designed to meet specific lifting requirements, offering tailored solutions for unique load capacities & applications.



# Services & Special Products

## Nickel-Plated Brass Cable Gland.



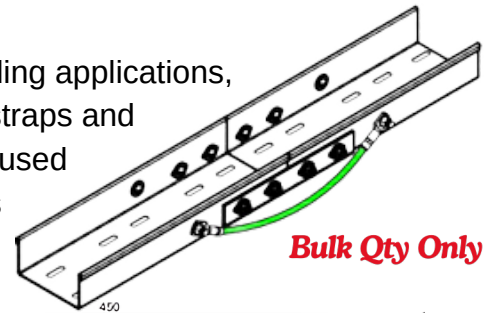
Nickel-plated cable glands are made of electrically conductive metal. They are resistant to corrosion and react in aggressive media. We offer a customized solution for each client in a wide variety and the best quality of nickel-plated cable gland available to suit different cables.

Made from brass with a protective nickel coating, these gland offer excellent durability and resistance to moisture, chemicals, and other corrosive elements, making them ideal for use in harsh environments. Nickel-plated brass cable glands provide a reliable, long-lasting solution for both armoured and unarmoured cables, balancing durability and cost-effectiveness. Applications are in, Outdoor electrical installations, Hazardous environments with exposure to moisture, chemicals, or dust, Industrial plants and machinery, Offshore platforms and refineries.

## Bonding Jumper, Earth Braids

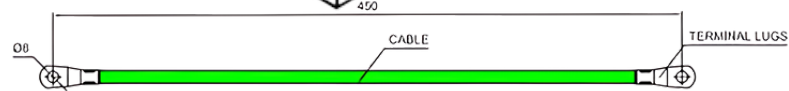
### Built for you

Earth bonding leads are used for earthing and electrical bonding applications, as flexible electrical connectors. Our highly flexible earthing straps and earth leads are made from high-conductivity copper grade is used in electrical distribution, building services, and process plants for a wide range of applications including lightning protection.



By selecting the correct braid, termination, and insulation, our earthing straps are optimized for each application and required

performance criteria concerning temperature, flexibility, corrosion resistance, weight, and electrical characteristics. Our electrical bonds are available in custom lengths and cross-sections to suit your individual needs, and with terminations sized to suit your application. Can be supplied with or without insulation. Insulation colors include Green / Yellow, Black, Blue, Brown, and Red. Competitive pricing and short lead times. Contact our sales office for further information or complete our Earth Bond inquiry form.



BONDING JUMPER, 450mm LONG, 25mm<sup>2</sup>  
GREEN PVC INSULATED COPPER WITH  
TERMINAL LUGS ATTACHED AT BOTH ENDS

• BRANDS WE SUPPLY

**PYROBAN**<sup>®</sup>



**Ex-tech**

**OME**



**PIONEER**<sup>®</sup>  
SAFETY GROUP



**DOOWIN**

**Palazzoli**



**WARDM**

**Weidmüller**

**CORTEM**<sup>®</sup>  
GROUP

**Enclosures**<sup>®</sup>

**Petrel**  
Hazardous Area Lighting & Control



**William Hackett**  
*Lifting Products Limited*

**powerlite**<sup>®</sup>



**HADEF**



**Fitzgerald**  
*...Better together*

**HUK** **HOIST UK**  
SAFETY ABOVE ALL

**ATM**   
lighting

**LIFTKET**  
WORKS 1948

**EURO ACCESS**<sup>®</sup>

**PROCONNECT**<sup>®</sup>  
industrial connectors

**JEL** **PRODUCTS**  
SUSTAINABLE | LIGHTING | SOLUTIONS



**Thermopads**  
*World class heating solutions*





## • GET IN TOUCH

Techsvolt is committed to providing top-quality industrial specialist products electrical, lighting solutions, coupled with exceptional customer service. With a wide range of products and specialized services, we cater to the diverse needs of our clients, ensuring reliability, efficiency, and safety in every application. Trust Techsvolt as your partner in powering and illuminating your industrial operations.

For more information or to discuss your specific needs:

## CONTACT US..



**TECHSVOLT LLC**

**Shams Business Center, Shams FreeZone**

**Al Messaned, Sharjah, UAE**

**Mobile:- +971 50 754 4685, +971 54 576 4342**

**Email:- [info@techsvolt.com](mailto:info@techsvolt.com)**

**Web:- [www.techsvolt.com](http://www.techsvolt.com)**

